

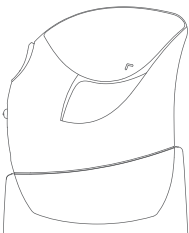
SENSAI

BIOMIMESIS VEIL DIFFUSER

SENSAI BIOMIMESIS VEIL DIFFUSER

User's Manual

EH-ZKF02



- Please read this User's Manual thoroughly then use the device correctly and safely.
- Please read "Safety Precautions" (p. 03-05) before using device.
- Please confirm that your warranty certificate includes the date and location of purchase, then store in a safe place together with the User's Manual.

**Guarantee
enclosed**

Keep Safe

823005 U0919-0

ENGLISH

DEUTSCH

FRANÇAIS

ITALIANO

ESPAÑOL

简体中文

日本語

Thank you for purchasing the SENSAL BIOMIMESIS VEIL DIFFUSER.

This device sprays a veil onto skin, and is to be used as a set with an SENSAL BIOIMIMESIS VEIL POTION (sold separately).




Contents	
Safety Precautions	03
Names of Parts	06
Preparation Before Using the VEIL DIFFUSER	
Pressing Down the VEIL POTION Nozzle	07
Inserting the VEIL POTION	08
Inserting the Batteries	08
Product Features and Cautions	09
Skin Care Steps	10
How to Use	
Pass Liquid	11
Spray	12
Cautions When Spraying	12
When the Veil Gets Stuck on Eyelashes	13
After Spraying	15
When the Veil Does Not Spray Properly	16
Frequently Asked Questions	19
Troubleshooting	20
Items Sold Separately	21
Ratings and Specifications	21
Disposal of Old Equipment	22
Guarantee	23

"SENSAL BIOMIMESIS VEIL DIFFUSER", "SENSAL BIOMIMESIS VEIL POTION", and "SENSAL BIOMIMESIS VEIL EFFECTOR" are referred to in this manual as "VEIL DIFFUSER", "VEIL POTION", and "VEIL EFFECTOR", respectively.



Safety Precautions (Be sure to observe the following safety precautions)

The following is an explanation of items that must be complied with to prevent personal injury or property damage.

- Below is the classification of the degrees of harm or damage that can occur with improper use.


 Danger	Denotes a serious hazard that could result in serious injury or death.
 Warning	Denotes a potential hazard that could result in serious injury or death.
 Caution	Denotes a hazard that could result in minor injury or property damage.

- Below are symbols explaining points to be complied with.

	Specific operating procedure that must not be performed.
	Specific operating procedure that must be followed in order to operate the unit safely.

Danger

To prevent problems

-  **This device must not be used in the vicinity of medical electronic devices or household therapy electronic devices, such as:**
 - Internally implanted medical electronic devices such as pacemakers
 - Life-supporting medical electronic devices such as artificial hearts or lungs
 - Medical electronic devices that are attached to the body such as electrocardiographs or drips
 (May cause malfunction of medical electronic devices or household therapy electronic devices as well as accident or ill health.)

Warning

This appliance can be used by children aged from 8 years and above and persons with reduced physical, sensory or mental capabilities or lack of experience and knowledge if they have been given supervision or instruction concerning use of the appliance in a safe way and understand the hazards involved. Children must not play with the appliance. Cleaning and user maintenance must not be performed by children without supervision.

ENGLISH

DEUTSCH

FRANÇAIS

ITALIANO

ESPAÑOL

简体中文

日本語

Safety Precautions

Safety Precautions

ENGLISH

DEUTSCH

FRANÇAIS

ITALIANO

ESPAÑOL

简体中文

日本語

Safety Precautions

⚠ Warning

To prevent problems with skin and body

- ⚠ • When receiving medical treatment, consult your doctor before using this product
- ⚠ • Stop using immediately if you experience pain or abnormalities in your skin or body (May cause accidents, or skin/physical problems)

Main device and accessories

- ⚠ • Store out of reach of children (May cause accidents or other problems)
- ⚠ • Do not use in the vicinity of flame, for example near space heaters, etc.
- ⚠ • Do not use near flammable substances like gasoline, paint thinner, or aerosols (May cause fire)
- ⚠ • Discontinue use immediately and turn off power in case of malfunction or breakdown (May cause fire, electric shock, or injury)
→ Please request an inspection or repair at the retailer immediately

⚠ Caution

Main device

- ⚠ • Store out of reach of children (May cause accidents or other problems)

To prevent problems with skin and body

- ⚠ • The following persons should not use this device
- ⚠ • Young children and those who cannot express their own will (May cause accidents or poor health)
- ⚠ • Do not spray towards eyes or directly into eyes (May cause physical problems)
- ⚠ • Do not apply too close to skin or when pressed against skin
- ⚠ • Do not use while pointed at another person or object
- ⚠ • Do not touch tip of nozzle (May cause pain due to static electricity)

04

⚠ Caution

Battery

- ⚠ • Do not place battery into fire, short-circuit, or disassemble (May cause burns or other injuries)
- ⚠ • Always follow cautions displayed on the batteries
- ⚠ • Check +/- poles and insert correctly
- ⚠ • Do not use old and new batteries together, or different types
- ⚠ • Remove drained batteries immediately
- ⚠ • Remove batteries when not using product for long periods
- ⚠ • Use batteries before their recommended use-by date (May cause injury or damage to surroundings due to battery generating heat, exploding, or leaking)

Please also heed the following cautions

- ⚠ • Do not bump or drop (May cause injury)
- ⚠ • Do not insert and use anything other than "SENSAI BIOMIMESIS VEIL POTION"
- ⚠ • Do not reuse empty VEIL POTION
- ⚠ • Do not insert anything into device other than a VEIL POTION (May cause accidents or other problems)

- Do not use on areas with injuries, swelling, eczema or other problems.
- Be cautious of any skin abnormalities during use. Stop use immediately and consult a dermatologist if you experience any adverse reaction, abnormalities like redness, swelling, itching, pain, discoloration (white spots, etc.), or blackheads, or if these abnormalities occur after exposure to sunlight. Continuing use may cause symptoms to worsen.
- Avoid contact with eyes. If contact occurs or you experience any eye abnormality, rinse thoroughly immediately. Contact an ophthalmologist if problems persist.
- Avoid inhalation of product.
- Avoid contact with clothing.

ENGLISH

DEUTSCH

FRANÇAIS

ITALIANO

ESPAÑOL

简体中文

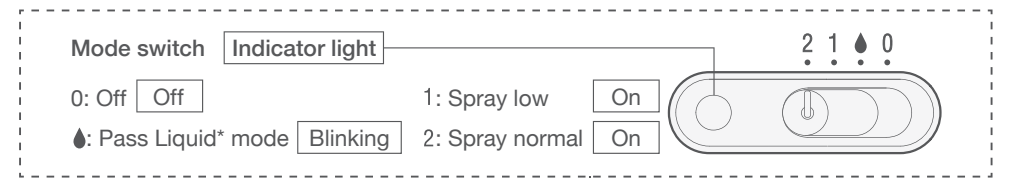
日本語

Safety Precautions

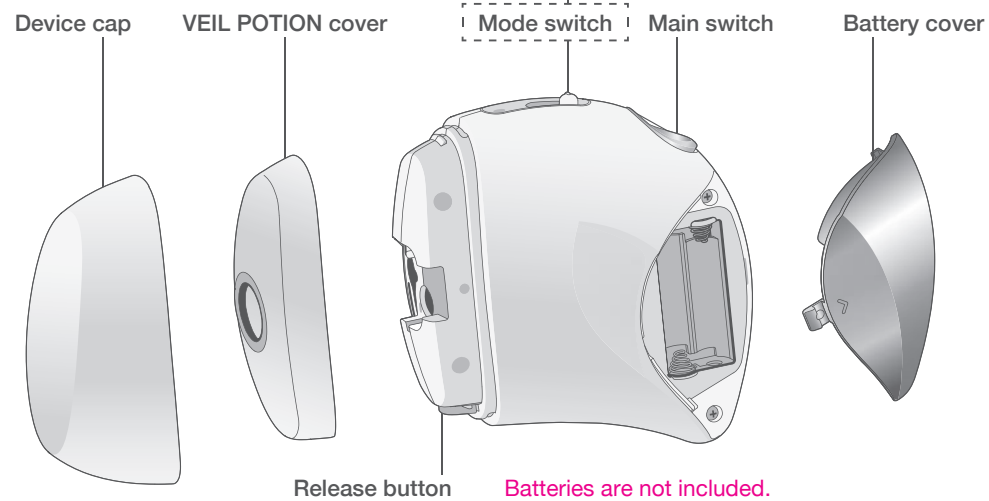
05

Names of Parts

SENSAI BIOMIMESIS VEIL DIFFUSER (Main device)

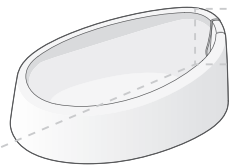


* See "Pass Liquid" on p. 11



Batteries are not included.
Please purchase separately.

Stand (accessory)



Nozzle stick* (accessory)

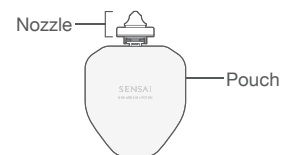


*The nozzle stick is clipped into the stand.

Eye guard (accessory)



SENSAI BIOMIMESIS VEIL POTION (sold separately)



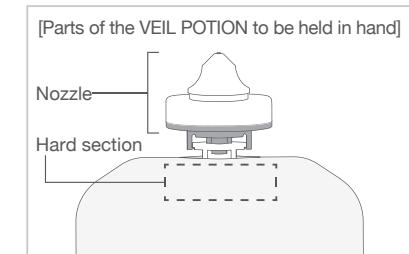
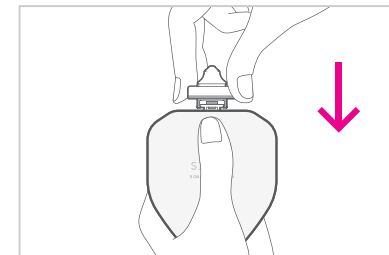
Preparation Before Using the VEIL DIFFUSER

This device sprays a veil onto skin, and is to be used after inserting a SENSAI BIOMIMESIS VEIL POTION (sold separately).

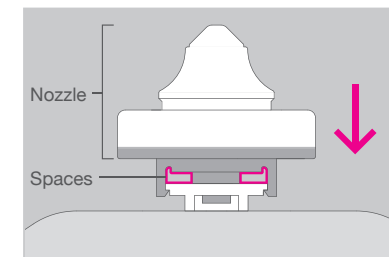
1 Pressing Down the VEIL POTION Nozzle

The VEIL POTION must be prepared by doing the following before inserting it into the device.

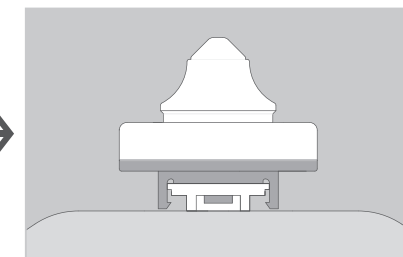
Hold onto the nozzle and the hard section on top of the pouch, and press nozzle down firmly.



- Press down until the spaces between the grey and white sections are no longer visible.



Press nozzle down



Spaces are no longer visible

- Liquid will not dispense unless nozzle is pressed down.
- After pressing the nozzle down, insert the VEIL POTION into the VEIL DIFFUSER and close the main device cap to store.
- Do not remove the nozzle.



- Nozzle has sharp edges.
Take care to avoid injuring fingers.

[Note]

- After pressing down the VEIL POTION nozzle, use all contents promptly (within approx. three months). If stored for too long, dryness may cause the liquid to harden, resulting in blockages.
- To avoid blockages due to dryness, use each VEIL POTION at least once per month after pressing the nozzle down, or allow liquid to pass through the tip of the nozzle. *See "Pass Liquid" on p. 11

Preparation Before Using the VEIL DIFFUSER (continued)

Product Features and Cautions

ENGLISH

DEUTSCH

FRANÇAIS

ITALIANO

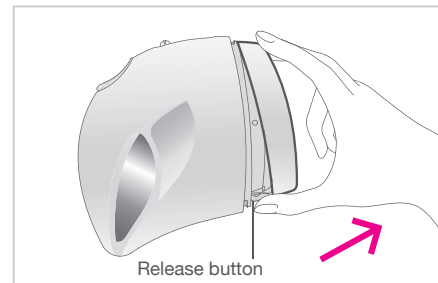
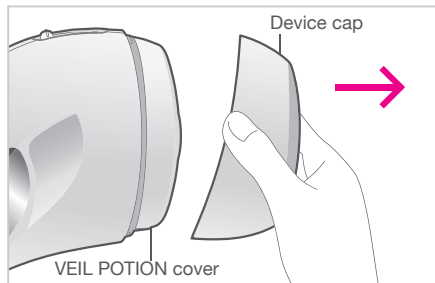
ESPAÑOL

简体中文

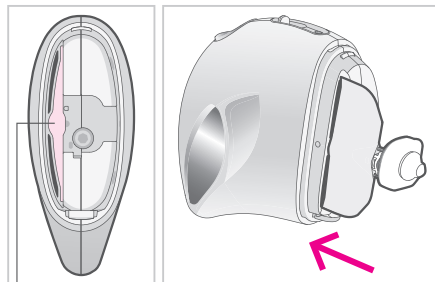
日本語

2 Inserting the VEIL POTION

1. Check to ensure the mode switch is set to 0 (OFF).
2. Press down on both sides of the cap to remove it from the device body.
3. Then press the release button and remove the VEIL POTION cover.

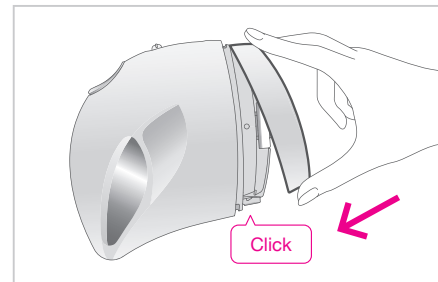


4. Insert the VEIL POTION into the device's VEIL POTION slot as shown.



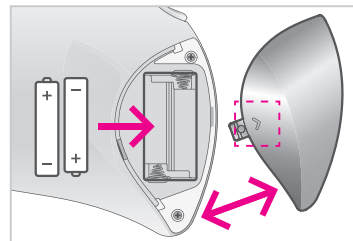
VEIL POTION slot

5. Close the VEIL POTION cover until it clicks.

**3** Inserting the Batteries •Batteries sold separately.

1. Check to ensure the mode switch is set to 0 (OFF).
2. Remove the battery cover.
3. Check the +/- poles and insert the batteries from the - end.
4. Replace the battery cover.

- Uses two AAA alkaline batteries (LR03).



• Check to ensure the +/- poles of the batteries do not have anything attached. • Use only AAA alkaline batteries. Using batteries other than those specified may cause a change in power or number of times device can be used. • We recommend using Panasonic batteries. • Do not use rechargeable batteries. • When replacing batteries, change both at the same time. • Do not replace batteries with wet hands. • Do not recharge non-rechargeable batteries. • When using the device, do not mix different types of batteries or new and used batteries. • Remove exhausted batteries from the device and dispose safely. • Remove batteries if the device is not used and stored for a long period. • Do not short circuit the supply terminals.

Device mechanism: Uses the potential difference between positive and negative electrical charges to spray a single long thread that weaves itself into a veil on top of skin.

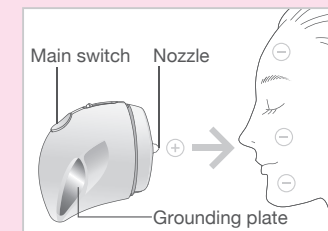
A person's body (including the face) takes on a negative electrical charge when they touch the main switch and grounding plate. The veil has a positive charge, so it is attracted to the face and sprays on cleanly.

[Note]

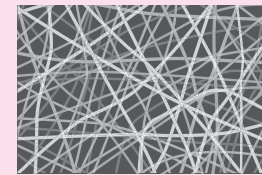
- Higher areas of the face, like the eyelashes and nose, tend to easily attract veil thread. Take extra care to avoid nose and eyes when spraying.

[Caution]

- Keep touching main switch and grounding plate while using the device.
- The nozzle takes on a positive charge while the device is running and immediately after. Do not touch. (Touching the nozzle will generate static electricity and cause a small electric shock.)



In order for the VEIL POTION to form a perfect veil, the liquid transforms into a stringy substance when sprayed. This characteristic makes the liquid prone to hardening due to dryness.



Enlarged image of veil



VEIL POTION

To avoid hardening and blockage due to dryness...

- After pressing down the VEIL POTION nozzle, use all contents promptly (within approx. three months).
- After use, wipe the nozzle clean and close the device cap firmly.
- Set inside the special stand to store. If the device is not stored upright, liquid may harden in the tip of the nozzle and cause blockage.
- When not using for long periods, we recommend occasionally (approx. once per month) letting liquid pass through the tip of the nozzle (liquid-passing). *See "Pass Liquid" on p. 11

ENGLISH

DEUTSCH

FRANÇAIS

ITALIANO

ESPAÑOL

简体中文

日本語

Preparation Before Using the VEIL DIFFUSER

Product Features and Cautions

Skin Care Steps

Pass Liquid

Use as the last step in your night skin care routine

Wash face



Regular care
lotion
Serum/essence
Emulsion
Cream, etc.



Apply VEIL EFFECTOR (sold separately)

Take 2-3 pumps of VEIL EFFECTOR into your palm and apply to entire face.

- VEIL EFFECTOR left on hands may cause the device to slip. Wipe off any remaining VEIL EFFECTOR before using the device.

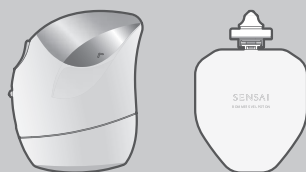


Pass Liquid



Apply veil

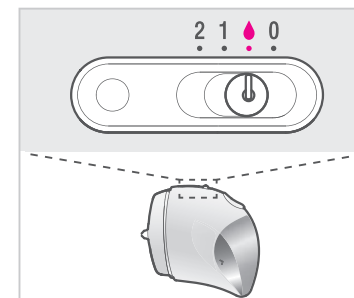
VEIL DIFFUSER/VEIL POTION (Sold separately)



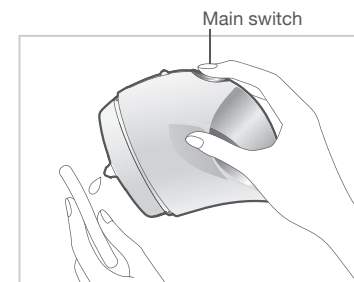
Please sleep with the veil on

- "Passing the liquid" is the act of allowing the veil liquid to pass through the tip of the nozzle in droplets before spraying.
- This must be done **each time** before using the VEIL DIFFUSER. (Doing so will prevent liquid from getting stuck in the nozzle tip.)

1 Set the mode switch to the droplet symbol (💧)



2 Press the main switch and allow 1-2 drops to be released from the nozzle (Wipe away liquid with a tissue)



- When opening and using a new VEIL POTION for the first time, it may take about one minute for liquid to emerge.

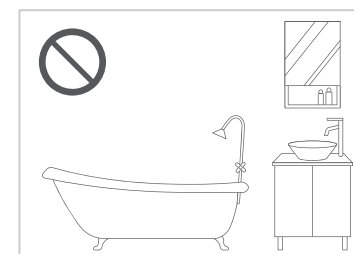
Environmental Conditions

Use the device in areas of low humidity, such as your living room or bedroom.

- When used in areas where humidity is too high, such as near the bath, the veil may not spray correctly.

Recommended environment

Temperature: 15-35 °C
Humidity: 25-75 %



ENGLISH

DEUTSCH

FRANÇAIS

ITALIANO

ESPAÑOL

简体中文

日本語

Skin Care Steps

ENGLISH

DEUTSCH

FRANÇAIS

ITALIANO

ESPAÑOL

简体中文

日本語

How to Use

Spray

ENGLISH

DEUTSCH

FRANÇAIS

ITALIANO

ESPAÑOL

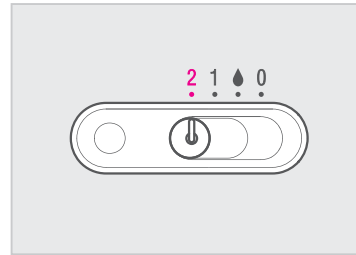
简体中文

日本語

1 Select mode

Set mode switch to 2 (spray normal).

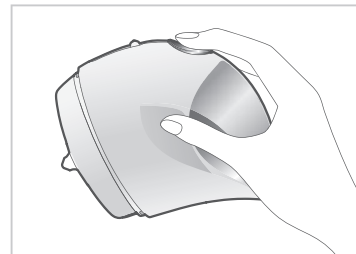
- Do not operate with wet hands.



2 Press the main switch and spray

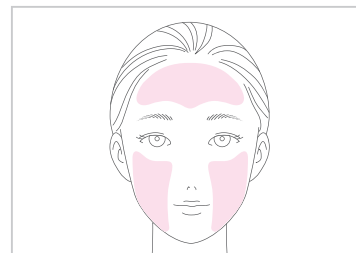
Hold device as illustrated.

- Secure your hairline using hairpins to avoid the veil getting stuck on hairs.



Areas to use the VEIL DIFFUSER

- Use on both cheeks and forehead.



Cautions When Spraying

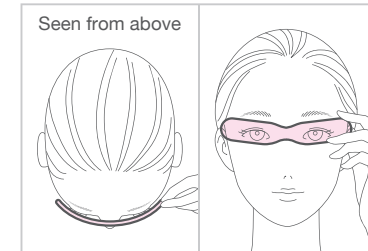
- **Avoid using around the eyes.** If used too close to the eyes, veil may get stuck on eyelashes or enter eyes.
- If veil gets stuck on eyelashes, gently pinch and roll them between your fingertips to remove.
- If veil enters eyes, do not rub or try to force it out. Rinse eyes thoroughly immediately.
- Contact an ophthalmologist if problems persist.
- Avoid using around the nose. Doing so can cause veil to get pulled away by higher areas of the face like lashes and nose, causing it to not attach to skin properly. *See "Device Mechanism" on p. 09



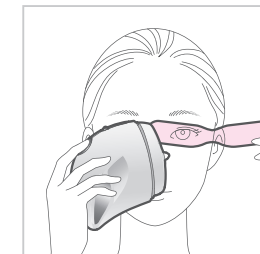
In order to avoid the veil from getting stuck on eyelashes or getting in eyes when spraying, place the supplied eye guard in front of the eyes.

3 Remove the eye guard from its case and hold it in front of your eyes

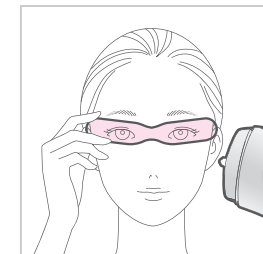
- Hold as close to the eyelashes as possible.
- If wearing glasses, use the eye guard after removing your glasses.
- VEIL EFFECTOR left on hands may cause the eye guard to slip. Wipe off any remaining Effector before using the device.



- When spraying on the opposite cheek from the hand holding the device, either slide the eye guard a little or switch the hand holding the device.



Or



If Veil Sprays on Eyelashes

If veil sprays on eyelashes, pinch lashes between your index finger and thumb and gently remove.

- Using a cotton swab and water to moisten lashes and rubbing gently will help the veil peel off cleanly.



ENGLISH

DEUTSCH

FRANÇAIS

ITALIANO

ESPAÑOL

简体中文

日本語

How to Use

How to Use

4 Spray veil on cheeks

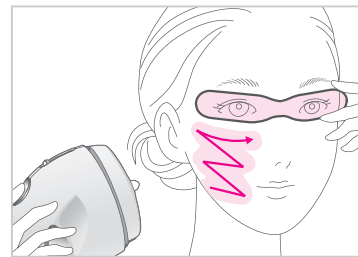
From a distance of **about 8 cm (the width of a fist)**, press the main switch and spray the veil.



Spray slowly in a zig-zag motion starting outward and working in.

- **Spray slowly** just until area start to turn white. (About 30 seconds for each cheek)

- Cannot be applied on another person. Please only use on yourself.
- The device makes a sound during use, but this is not abnormal.
- Device will stop if it comes too close to skin. It can be restarted by re-pressing the main switch.



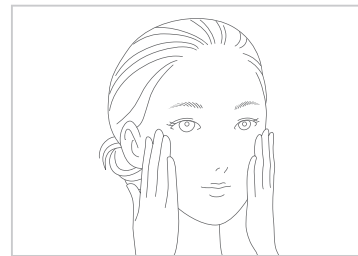
5 Spray veil on forehead

Apply to entire forehead in left-to-right motions. (About 30 seconds for the entire forehead)



6 Blend into skin by pressing with your hand

- It's not a problem if the veil is applied unevenly.
- Veil will turn clear when blended into skin.
- If concerned about whiteness, use your finger to apply additional VEIL EFECTOR and blend.

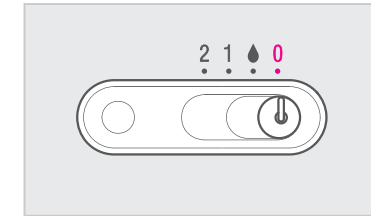


- **Please sleep with the veil on.**

After Spraying

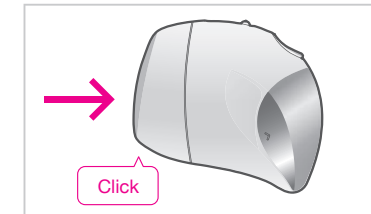
1 Set the mode switch to 0 (OFF)

- Wipe the tip of the nozzle clean. (The tip of the nozzle may harden and become blocked if not wiped clean, causing the veil to spray incorrectly.)



2 Close the device cap

- Ensure it clicks closed. (If the cover is not closed, liquid may come out of the nozzle tip and harden, causing blockage.)
- In case the VEIL DIFFUSER gets dirty, wipe with clean tissue or cloth.

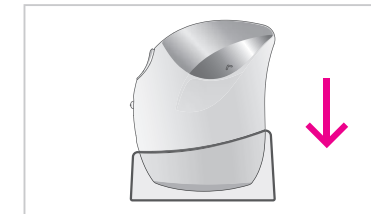


*If the cover is oriented incorrectly it won't click closed.

- Do not wash the device with water.
- Do not use alcohol, nail polish remover or cleaning agents (hand soap or similar) on the device.
- Do not put your hand into the VEIL POTION slot.

3 Return the device to its stand and store

- If the device is not stored upright, liquid may harden in the tip of the nozzle and cause blockage.



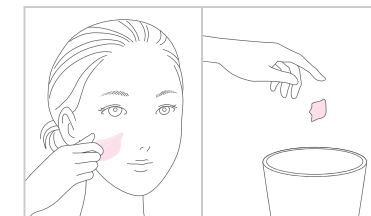
4 Immediately remove any veil and other impurities from the eye guard

The Next Morning

1 Remove the clear veil

- Hard-to-remove areas can be wiped away using a cotton pad saturated in lotion.
- This can also be done when the veil does not form properly.

- Do not flush or rinse removed veil down the drain.



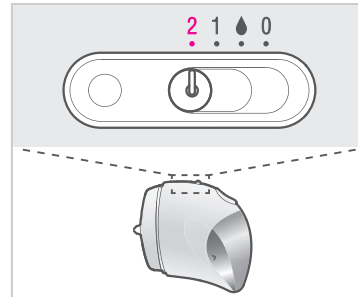
2 Continue with your usual face wash and skin care routine

When Veil Does Not Spray Properly

1 Check the batteries

1. Check if the indicator light turns on.

- Set the mode switch to 2 and press the main switch to check that the indicator light turns on. If it does not, replace with new batteries.
*See "Inserting the Batteries" on p. 08



2. Check if veil sprays.

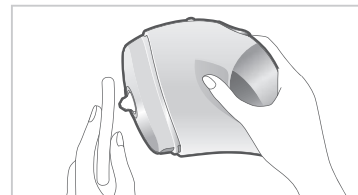
- Set the mode switch to 2 and press the main switch to check if the veil sprays.

If veil still does not spray after replacing the batteries, follow the steps below.

2 Pass liquid *See "Pass Liquid" on p. 11

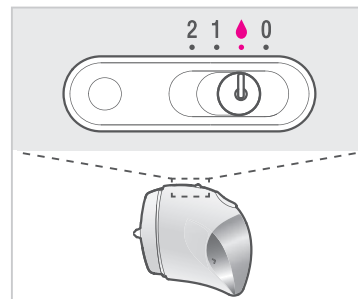
1. Clean the nozzle tip.

- Use a tissue to wipe the nozzle tip clean.

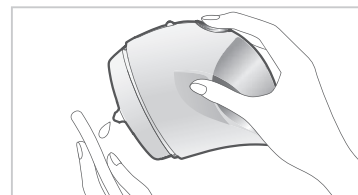


2. Pass the liquid to check if liquid comes out.

- Set the mode switch to the droplet symbol (●) and press the main switch for about one minute to see if any liquid comes out.
- If liquid comes out, set the mode switch to 2 and press the main switch to check if veil sprays from the device.

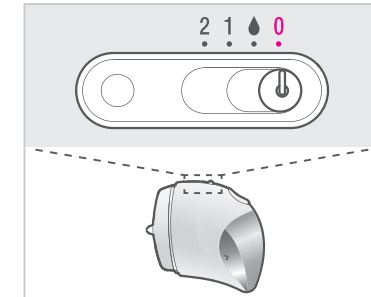


If no liquid comes out after trying to pass liquid, or if veil has difficulty spraying, follow the "Use the Nozzle Stick" instructions on p. 17.

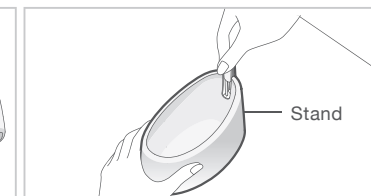
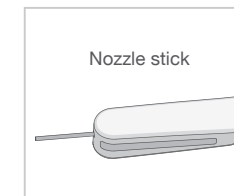


3 Use the nozzle stick

1. Set the mode switch to 0 (OFF).



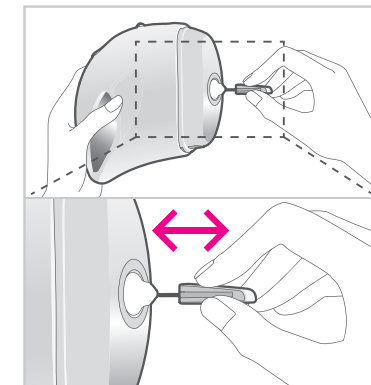
2. Grasp the nozzle stick clipped inside the stand and slide upwards to remove.



3. Clean the hole of the nozzle with the nozzle stick.

Insert the nozzle stick straight into the tip and move in-and-out three or four times.

- Do not use any object (like a needle, etc.) other than the nozzle stick. Doing so may cause the device to malfunction.
- Use a tissue to wipe away hardened liquid or any other substance from the nozzle stick.



4. Pass liquid and check if veil sprays.

If veil still does not spray properly, see "Troubleshooting" on p. 20~21.

Frequently Asked Questions

ENGLISH
DEUTSCH
FRANÇAIS
ITALIANO
ESPAÑOL
简体中文
日本語

Question	Answer
The veil sprays on my skin as a liquid. What can I do?	<ul style="list-style-type: none"> • Spray at a distance of approx. 8 cm (the width of a fist) from your face. • Use the device in the recommended environment, with a temperature between 15-35 °C, and humidity between 25-75 %.
I felt some static electricity during use. Is it safe?	<ul style="list-style-type: none"> • Because of the way this device is designed, you may feel some static electricity. This is the same kind of static electricity you may encounter in daily life, and there is no risk to safety.
Is it OK to store the device for long periods with the VEIL POTION inside?	<ul style="list-style-type: none"> • After pressing down the VEIL POTION nozzle, use all contents promptly (within approx. three months). Storing an open VEIL POTION for long periods may cause it to dry out and become blocked. • We recommend either using the VEIL POTION or circulating liquid through the nozzle tip at least once per month after opening. • When storing, keep the device upright in its stand.
Can a veil be sprayed on another person's face or hands?	<ul style="list-style-type: none"> • A veil cannot be applied on another person. Please only use on yourself.
If I want to use a face mask, when should I do this?	<ul style="list-style-type: none"> • When applying a face mask, use it at any of the steps before "VEIL EFFECTOR".
Water, liquid, or another foreign object or substance accidentally got into the device where the refill is inserted. What should I do?	<ul style="list-style-type: none"> • Please return product to retail outlet for inspection and repair.

ENGLISH
DEUTSCH
FRANÇAIS
ITALIANO
ESPAÑOL
简体中文
日本語

Frequently Asked Questions

Troubleshooting

Please check the following and take the appropriate steps

Problem	Possible Causes	Steps to Take
Device doesn't run (Lamp doesn't light up)	• VEIL POTION Cover is not closed properly	• Make sure you hear a click when re-closing the VEIL POTION Cover.
	• VEIL POTION is not correctly inserted	• Remove and reinsert the VEIL POTION.
	• Dead or low batteries	• Replace with new batteries.
	• Batteries are inserted backwards	• Check battery poles and reinsert.
No liquid comes out when passing liquid	• The VEIL POTION nozzle is not sufficiently pressed down	• While referring to "Preparation Before Using the VEIL DIFFUSER" (p. 07), remove the VEIL POTION, press the nozzle down again, and reinsert.
	• VEIL POTION is not correctly inserted	• Remove and reinsert the VEIL POTION.
	• Hardened liquid is stuck inside the VEIL POTION nozzle (After having not used the device for a few days)	• Use the included nozzle stick to clean the tip of the nozzle and ensure any blockages are removed. (See "Use the nozzle stick" on p. 17) If liquid still does not come out after following the above steps, replace with a new VEIL POTION. When not using the VEIL DIFFUSER, ensure device cap is closed. Use opened VEIL POTION promptly.
	• VEIL POTION is empty	• Replace with new VEIL POTION.
Liquid is released but veil does not spray	• Too little liquid is left inside VEIL POTION	• Replace with new VEIL POTION.
	• Dead or low batteries	• Replace with new batteries.
	• Condensation due to temperature difference	• Place the device in a warm environment for one hour or longer, then wipe the nozzle and device using a clean, dry tissue or cloth.
	• Device turns off because it's too close to skin	• Restart by re-pressing the main switch. Spray at a distance of approx. 8 cm (the width of a fist) from your face.
Volume of spray decreases	• Insufficient liquid coming from VEIL POTION	• Pass liquid through again and check if liquid comes out of the nozzle tip.
	• Liquid is stuck in nozzle tip	• Wipe the nozzle tip clean using a clean, dry tissue or cloth.
	• Device wasn't used for a long period	• Pass liquid through again sufficiently, then use promptly.
	• Device cap wasn't closed properly	• Pass liquid through again sufficiently and ensure the device cap clicks when re-closing. Replace with new VEIL POTION.
	• Too little liquid is left inside VEIL POTION	• Replace with new VEIL POTION.
• Dead or low batteries	• Replace with new batteries.	

Problem	Possible Causes	Steps to Take
Device doesn't spray straight	• Insufficient liquid coming from VEIL POTION	• Pass liquid through again and check if liquid comes out of the nozzle tip.
	• Liquid is stuck in nozzle tip	• Wipe the nozzle tip clean using a clean, dry tissue or cloth.
	• Device wasn't used for a few days	• Pass liquid through again sufficiently, then use promptly.
	• Device cap wasn't closed properly	• Pass liquid through again sufficiently and ensure the device cap clicks closed when re-closing.
Veil is patchy and/or cottony	• The device is too close to face, insufficient hand movement	• Refer to How to Use (p.11~15).
	• VEIL POTION is not correctly inserted	• Remove and reinsert the VEIL POTION.
	• Humidity is high	• Use device in a room with low humidity, like the living room or bedroom.

Products sold separately

SENSAI BIOMIMESIS VEIL POTION (9 mL)



SENSAI BIOMIMESIS VEIL EFFECTOR (40 mL)



Ratings and Specifications

Power supply method	Dry cell batteries
Battery type	Two AAA alkaline batteries (LR03) (sold separately)
Weight	Approx. 230 g (including cover, not including batteries or stand)

ENGLISH

DEUTSCH

FRANÇAIS

ITALIANO

ESPAÑOL

简体中文

日本語

Troubleshooting

ENGLISH

DEUTSCH

FRANÇAIS

ITALIANO

ESPAÑOL

简体中文

日本語

Troubleshooting — Products sold separately — Ratings and Specifications

Disposal of Old Equipment

ENGLISH

DEUTSCH

FRANÇAIS

ITALIANO

ESPAÑOL

简体中文

日本語



Only for European Union and countries with recycling systems. This symbol on the products, packaging, and/or accompanying documents means that used electrical and electronic products must not be mixed with general household waste.

For proper treatment, recovery and recycling of old products, please take them to applicable collection points in accordance with your national legislation.

By disposing of them correctly, you will help to save valuable resources and prevent any potential negative effects on human health and the environment.

For more information about collection and recycling, please contact your local authority.

Penalties may be applicable for incorrect disposal of this waste, in accordance with national legislation.

SENSAI BIOMIMESIS VEIL DIFFUSER GUARANTEE

Thank you for purchasing this product which is covered by a guarantee.

During the guarantee period, this product will be repaired free of charge or replace defective parts. As an option, the product may be replaced.

The legal guarantee will not apply in case of normal wear and tear, intentional damage or negligence, abnormal conditions of storage or use, accident and any modification, repair or replacement of parts made by you or a non-authorised third party.

In the unlikely event your product fails, please check the "Troubleshooting" section of user's manual. If after checking the user's manual, you consider that the product is defective, please contact promptly the retailer that sold you the product with this guarantee and the sales receipt.

Caution: Please retain your sales receipt.

MODEL	EH-ZKF02
GUARANTEE PERIOD	1 year from the date of first purchase. (Except accessories and products sold separately.)
DATE OF PURCHASE	
RETAILER	Name/Address/Tel number:

SENSAI COSMETICS INC.
121 Avenue des Champs-Élysées, 75008 Paris
www.sensai-cosmetics.com